

ULTRA

BLADE FUSES



Ultra Wiring Connectivity System Ltd. renowned name in manufacturing of automotive connectors, terminals and precision plastic components from the past 3 decades, have also set up the state-of-the art Blade Fuse manufacturing plant in India in the year 2014.

The plant is equipped with high speed & highly accurate hydro-pneumatic presses and fully automatic PLC Assembly machines. For the plastic housing, Company is already a pioneer in manufacturing plastic connectors and components for OEMs.

The company is equipped with in-house testing labs for all types of tests required for fuses as per (JASO standards), along with a strong R&D team lead by a highly experienced team of engineers.

MINI BLADE FUSE



Product Lineup

Ampere Rating(A)	Part Number	Housing Colors	Resistance Value	Voltage Drop*1
5	UF0305-0122	Tan	16.7 mΩ	112 mV
7.5	UF0375-0130	Brown	11.1 mΩ	112 mV
10	UF0310-0104	Red	7.82 mΩ	106 mV
15	UF0315-0110	Blue	4.93 mΩ	99 mV
20	UF0320-0114	Yellow	3.48 mΩ	95 mV
25	UF0325-0121	Natural	2.58 mΩ	92 mV
30	UF0330-0107	Green	2.12 mΩ	86 mV
35	UF0335-0131	Dark Green	1.64 mΩ	79.85 mV
40	UF0340-0106	Orange	1.36 mΩ	74.54 mV

#1 Voltage drop: apply 100% of the rated current.

STANDARD BLADE FUSE



Product Lineup

Ampere Rating(A)	Part Number	Housing Colors	Resistance Value	Voltage Drop*1
5	UF0105-1422	Tan	17.5 mΩ	121 mV
7.5	UF0175-1430	Brown	11.0 mΩ	112 mV
10	UF0110-1404	Red	8.12 mΩ	116 mV
15	UF0115-1410	Blue	5.08 mΩ	105 mV
20	UF0120-1414	Yellow	3.58 mΩ	99 mV
25	UF0125-1421	Natural	2.76 mΩ	96 mV
30	UF0130-1407	Green	2.20 mΩ	92 mV
35	UF0135-1431	Dark Green	1.76 mΩ	91 mV
40	UF0140-1406	Orange	1.48 mΩ	95 mV

#1 Voltage drop: apply 100% of the rated current.

General Specification

Rated Voltage	DC32V
Breaking Capacity	1000A
Recommended Operating Temp.	-40°C~120°C*2
Standard	ISO8820-3
Country of Origin	India
Plating	Sn Plating
Standard Packaging	1,000

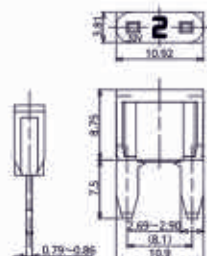
*2 Please contact us for the details of operating temperature.

Time-Current Characteristic

% of Ampere Rating(A)	Operating Time	
	Min	Max
110%	100hrs.	—
135%	0.75sec.	600sec.
160%	0.25sec.	50sec.
200%	0.15sec.	5sec.
350%	0.04sec.	0.5sec.
600%	0.02sec.	0.1sec.

*The fuse characteristic may change depending on the conditions of use.

Dimensions



General Specification

Rated Voltage	DC32V
Breaking Capacity	1000A
Recommended Operating Temp.	-40°C~120°C*2
Standard	ISO8820-3
Country of Origin	India
Plating	Sn Plating
Standard Packaging	1,000

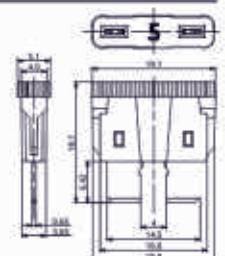
*2 Please contact us for the details of operating temperature.

Time-Current Characteristic

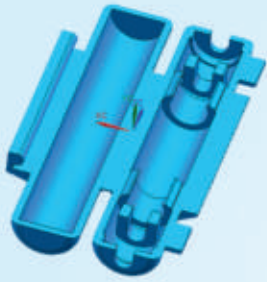
% of Ampere Rating(A)	Operating Time	
	Min	Max
110%	100hrs.	—
135%	0.75sec.	600sec.
160%	0.25sec.	50sec.
200%	0.15sec.	5sec.
350%	0.04sec.	0.5sec.
600%	0.02sec.	0.1sec.

*The fuse characteristic may change depending on the conditions of use.

Dimensions



FUSE HOLDERS



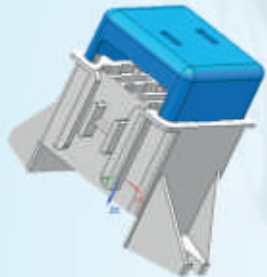
U4302-1201

1 POLE GLASS
FUSE HOLDER



U4302-1201

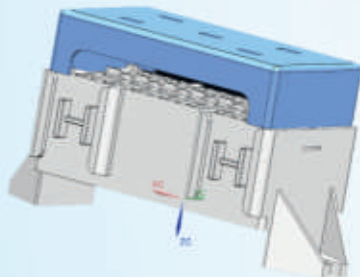
HYBRID FUSE BOX
(5 PIN RELAY +
3 BLADE FUSES)



U4306-3403

U4307-3403

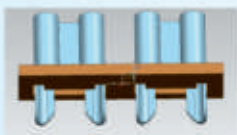
FUSE BOX 12 POLE
WITH COVER



U4304-3403

U4305-3403

FUSE BOX 28 POLE
WITH COVER



U4224-4927

FUSE CLIP WITH
BAKELITE HOLDER

TYPES OF PACKAGING



UVS[®]

ULTRA

Blade Fuses

ULTRA WIRING CONNECTIVITY SYSTEM LTD

**Manufacturers of Automotive Connector & Terminal,
Precision Plastic Components, Windshield Wiper Blades & Blade Fuses**

Plot No. 287 - A&B, Sector 59, HSIDC Industrial Estate, Ballabgarh, Faridabad, Haryana 121004 (INDIA)

M.: +91 9311360114, +91 9312327007, +91 9311360110 | E-mail: ultrafbd@gmail.com | Web: www.ultrawiring.com